

# COOL-LITE XTREME 60/28 & 60/28 II HIGH SELECTIVE SOLAR CONTROL GLASS

Project: Balice Airport  
Architects: APA Czech,  
Duliński, Wróbel  
from Cracow

BUILDING GLASS POLAND



SAINT-GOBAIN

# COOL-LITE XTREME 60/28 & 60/28 II

## HIGH SELECTIVE SOLAR CONTROL GLASS

COOL-LITE XTREME is a unique, high selectivity solar control glass with selectivity (the ratio of visible light to solar heat gain) above 2! Two versions of the product are available, COOL-LITE XTREME 60/28 for annealed and COOL-LITE XTREME 60/28II for tempered.

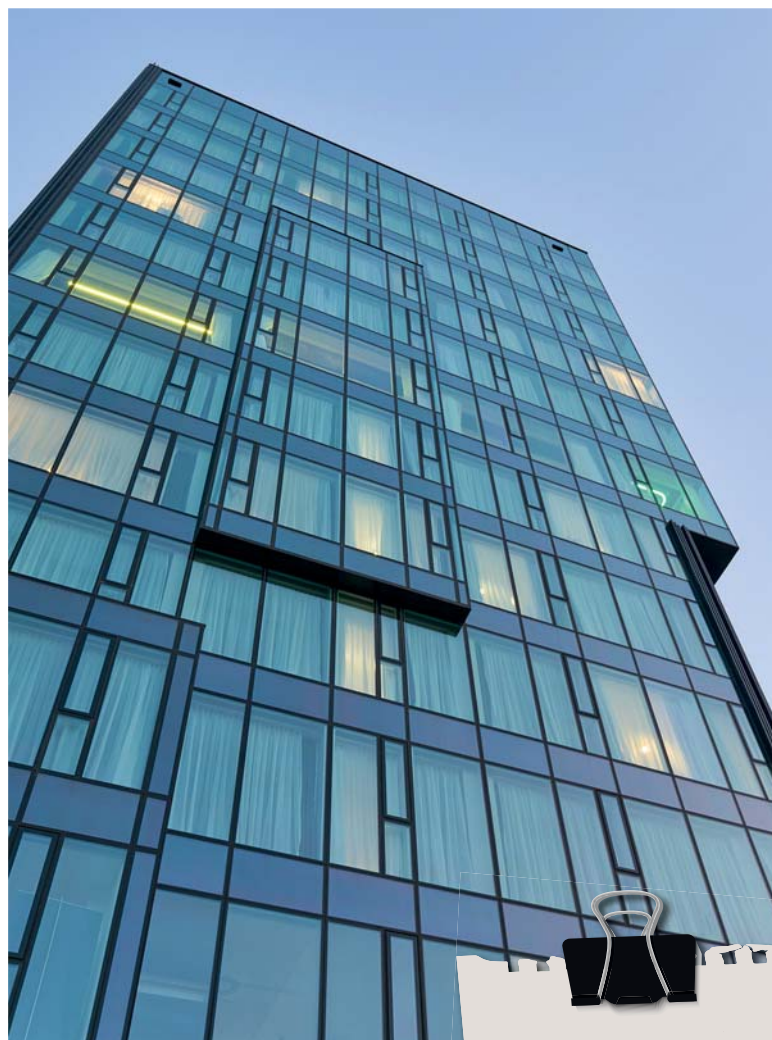
### APPLICATIONS

COOL-LITE XTREME 60/28 and 60/28 II are two extremely selective solar control coatings for use in the commercial and high end building market. Due to the high performance of the coating, it is ideally suited to façade or overhead glazing in applications requiring annealed and toughened or heat treated glass.

### BENEFITS

COOL-LITE XTREME combines a lot of advantages for architects and investors:

- **Transparency:** a high light transmission to create brighter interiors and year round natural lighting.
- **Comfort:** a low solar factor to reduce the burden on costly air-conditioning.
- **Energy saving:** an excellent U-value of 1.0W/m<sup>2</sup>K making it the ideal product for energy savings and improved thermal insulation.
- **Aesthetic:** its low reflection and neutral aspect makes it the ideal product for modern architecture as well as for renovation of "historic" buildings.
- **Safety:** COOL-LITE XTREME 60/28II offers higher mechanical and thermal durability.



#### PROJECT:

Wisher Enterprise

#### ARCHITECT:

Cushman & Wakefield

Arch. Jacek Zub

Arch. Marek Demianiuk

## PROCESSING

COOL-LITE XTREME 60/28 II must always be toughened or heat-strengthened before assembly into a double-glazed or triple-glazed unit.

For optimum performance and aesthetics COOL-LITE XTREME 60/28 and 60/28 II coatings must be edge-deleted and should always be positioned on face 2 of a double-glazed or triple-glazed unit.

COOL-LITE XTREME 60/28 and 60/28 II can be used side-by-side in the same façade, though there can be slight colour variations. If both glass types are intended for use together in one façade, SGG recommends the use of samples to observe and evaluate the matching.

## RANGE

### Monolithic glass:

Standard thickness: 6, 8, 10 mm

Substrate: PLANICLEAR

Size: 6000 x 3210 mm

Others size thickness please send your request.

## PERFORMANCE DATA



SPECTROPHOTOMETRIC PARAMETERS:	DGU 6/16/4 XTREME POSITION #2	TGU 6/16/4/16/4 XTREME POSITION #2 PLANITHERM XN POS. #5
LIGHT TRANSMISSION $L_T$	60%	55%
EXTERNAL LIGHT REFLECTION ( $L_{RE}$ )	14%	15%
INTERNAL LIGHT REFLECTION ( $L_{RI}$ )	16%	19%
SOLAR FACTOR $g$ (EN 410)	28%	26%
$U_g$ [W/(m <sup>2</sup> .K)]	1.0	0.5

## SAINT-GOBAIN BUILDING GLASS POLSKA

ul. Szklanych Domów 1  
42-530 Dąbrowa Górnicza  
POLAND  
bgp@saint-gobain.com

[www.saint-gobain-building-glass.pl](http://www.saint-gobain-building-glass.pl)  
[www.glassolutions.pl](http://www.glassolutions.pl)  
[www.saint-gobain-facade-glass.com](http://www.saint-gobain-facade-glass.com)



@SaintGobainBuildingGlassEurope



Saint-Gobain



@saintgobain



Project: Balice Airport  
Architects: APA Czech, Duliński, Wróbel from Cracow

